

Safety Switch General Information

Global Specifications	
SystemVoltage	240 VAC
SwitchType	Single Throw - GeneralDuty
Poles/Blades	3-Pole
Amperage	100
Protection	Fusible withNeutral
EnclosureType	NEMA1
SpecialPaint	Red
FuseClips	Standard
SwitchLugs	Standard
FungusProofTreatment	N
Lock-OnProvision	Y
FusePullers	N
ControlPole	N
GroundLugs	Y
StainlessMechanism	N
MillDuty	N

Cover Controls

QUANTITY	DESCRIPTION
----------	-------------

Nameplate

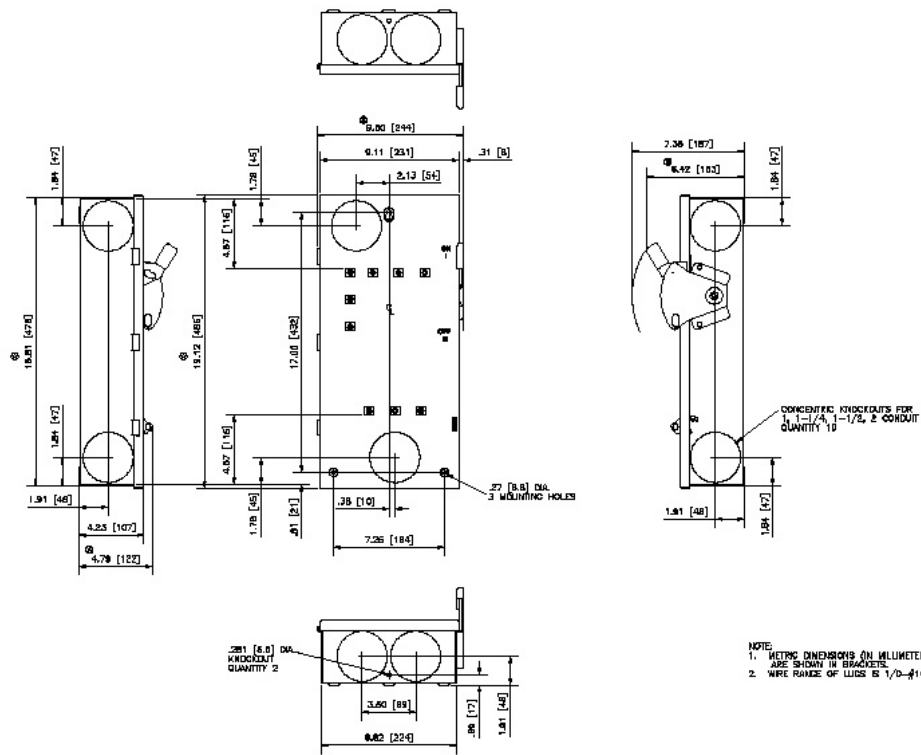
FirstLine:	FirePump
SecondLine:	DisconnectingMeans

Safety Switch Catalog No.

DG323NGBLORED

<p>The information on this document is created by Eaton Corporation. It is disclosed in confidence and it is only to be used for the purpose in which it is supplied.</p>	PREPARED BY	DATE			
		6/28/2016			
	APPROVED BY	DATE	JOB NAME	SAFETY SWITCHES	
		DESIGNATION			
	VERSION	TYPE		DRAWING TYPE	
	1.0.0.1	Safety Switch General Information		Customer Appr.	
NEG-ALT Number	REVISION	DWG SIZE	G.O.	ITEM	SHEET
F4860929X5K3-0000	0	A			1 of 1

ELTON



NOTE:
 1. MOUNTING DIMENSIONS (IN MILLIMETERS)
 ARE SHOWN IN BRACKETS.
 2. WIRE RANGE OF LUGS IS 1/0-#14 COPPER OR ALUMINUM.

REV	DESCRIPTION	DATE
1	ISSUE FOR PRODUCTION	09/28/12
2	REVISION	
3	REVISION	
4	REVISION	
5	REVISION	
6	REVISION	

ELTON CUTLER-HAMMER 100 AMP TYPE 1 GENERAL DUTY SWITCH	95-1452
--	---------